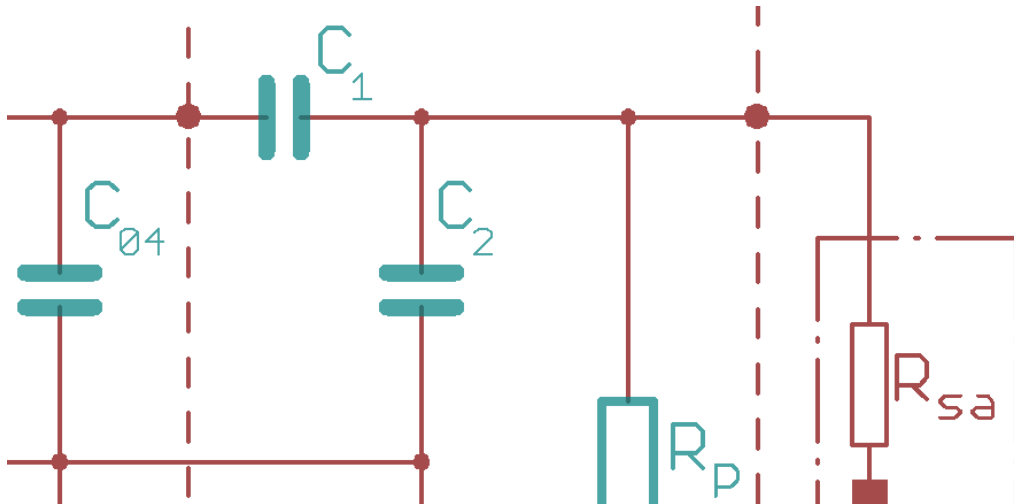


Antenna Match Calculation Guide for TWN4 Nano Family

Symmetrical and 50 Ohm Antenna Tuning

DocRev9, April 29, 2022



ELATEC GmbH

Contents

1	The Antenna	3
1.1	Calculation Tool (PCB Toolkit, loaded from www.saturnpcb.com)	3
1.2	Messure the antenna with MINI VNA	4
2	Determine the Antenna Matching Parameters	6
2.1	Antenna direct match	6
2.2	Antenna Adaption 50 Ohm	8
3	Epilogue	10
4	Disclaimer	11

1 The Antenna

The optimum inductance of a HF antenna is a value around $L = 1\mu H$ for a proper matching. But a wide range of $0.3\mu H$ up to $4\mu H$ still can be matched.

Small conductor tracks ($< 0.5mm$) are good for small antennas. The disadvantage in this case is, that the current for a strong field is less than bigger conductor tracks (about $1mm$). For small antennas you can not design big wires, because the antenna area in the middle would be smaller. So you have always to find an individual solution / compromise for your antenna.

In the following two ways are shown to determine the antenna inductance parameter. The first way is a calculation with a tool from the internet and the second way a determination with a MINI VNA equipment.

The chapter after that deals with the determination of the antenna parameters. Two ways will be introduced: The antenna direct match and the 50Ω antenna adaption.

1.1 Calculation Tool (PCB Toolkit, loaded from www.saturnpcb.com)

We measure the antenne outline on the Nano Development-Board (here as example):

Dimmension:	$45.0 * 47.6mm$
=> Outer Diameter:	$(45.0 + 47.6)/2 = 46.3mm$ (Middle value)
Conductor Width:	$1.1mm$
Conductor Spacing:	$0.4mm$
Turns:	3

Table 1.1: Measured antenna values on PCB

Install the PCB Toolkit (if not installed yet), start the tool and select the register card "Planar Inductors". Fill out the values in the upper left corner on the screen and press **"Solve!"** on the right.

Planar Inductors Calculator

Turns (n): 3

Conductor Spacing (s): 400 um

Conductor Width (w): 1100 um

Outer Diameter (dout): 46300 um

Inner Diameter: 38100.000 um

Fill Factor: 0.0972 um

Inductance: 880.8909 nH

Formula: $L_{mw} = K_1 \mu_0 \frac{n^2 d_{avg}}{1 + K_2 \rho}$

Options:

- Base Copper Weight: 18um
- Plating Thickness: 35um
- Inductor Geometry: Square
- Units: Metric
- Substrate Options: FR-4 STD
- Er: 4.6
- Tg (°C): 130
- Temp Rise (°C): 20
- Temp in (°F): 36.0
- Ambient Temp (°C): 22
- Temp in (°F): 71.6

Information:

- Total Copper Thickness: N/A
- Via Thermal Resistance: N/A
- Via Count: 10
- Conductor Temperature: N/A
- Via Voltage Drop: N/A

Inductance L	881	nH
----------------	-----	------

Table 1.2: Calculated value with the PCB tool

The inductance is a calculated value from ideal geometry (no round corners and square). The real value would be less. You can start calculation with this parameter in the next chapter!

For the coil resistor we take value $R_{coil} = 2R$. This is a practical start value.

1.2 Measure the antenna with MINI VNA

Start the MINI VNA and do calibration if not done. For measuring select a range of frequency from $11MHz$ to $16MHz$ (an array around $13.56MHz$) and start measuring with your antenna (without any other components on the antenna and the final environmental conditions especially on metal environment or a ferrite for shielding).

Select the mouse marker at the frequency of $13.56MHz$ and open the mathematic dialog as shown:

	Minimum	Marke	Maximum
Frequenz (Hz)	---	13.563.164	---
Dämpfung (dB)	---	-0,36	---
Grenze (dB)	6,00		
Bandbreite (Hz)	0		
C:	172,30 pF		
Rs:	2,98Ω		
Rp:	1,56kΩ		
Mode	---		
Ben.:	<input checked="" type="radio"/> RL	<input type="radio"/> IL	

The measured values are:

Inductance L	800	nH
R_s (coil)	2.98	R (in praxis this value is normally smaller)
C_{pa}	172	pF (a calculated value from the inductance)

Table 1.3: Calculated values with the MINI VNA

With these values we can start matching!

2 Determine the Antenna Matching Parameters

The Software **AntennaTuner.exe** calculates the matching parameters with mathematical equations - as good as the input values are given.

2.1 Antenna direct match

Antenna Tuner V1.01

Antenna Adaption 50 Ohm **Antenna Direct Match**

Input Parameter:

HF Frequency f	13,56	MHz
Antenna Inductance La	800	nH
Antenna Resistor Rsa	3	Ohm
Quality Factor Q	20	
Antenna Adaptation Ri	50	Ohm

Information:

Antenna Inductance Ca	172,2	pF
Resistor Rsa+Rs	6,4	Ohm

Calculated Match:

Resistor Rs (Variant 1)	3,4	Ohm
Resistor Rp (Variant 2)	2563	Ohm
Serial Capacity C1	62	pF
Parallel Capacity C2	111	pF

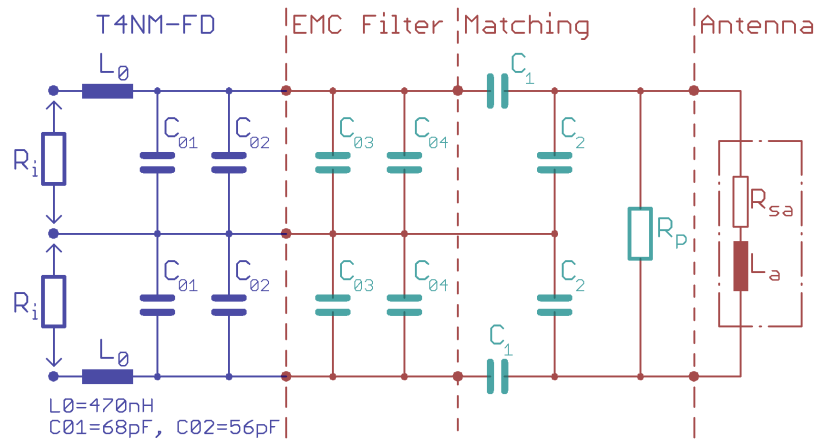
Status:

Calculate

Variant 1 with Q-Adaption serial

Variant 2 with Q-Adaption parallel

The schematic in the screen of the software (register "**Antenna Direct Match**" is selected) shows the circuit diagram of the antenna direct matching (same as the Antenna-Direct-Match board on the Nano-Development-Board). Note for the Nano Module: If it is not in card mode or passive P2P target, the ANT1 and ANT2 pins do not need to be connected. If used, you wire ANT1 with 82pF (e.g.) to the antenna connection pad and ANT2 analogous to the other:



The components L_0 , C_{01} and C_{02} on the left part "T4NM-FD" are fix placed on the Nano-Module.

The "EMC-Filter" with the capacitance C_{03} and C_{04} adjust the cut off frequency of the output circuit. This adaption is always necessary.

The "Matching" part adapts the output circuit to individual antennas.

EMC Filter / Matching Parameters in detail:

The **EMC filter** is a second order low pass filter and contains an inductor L_0 and a capacitance $C_0 = C_{01} || C_{02} || C_{03} || C_{04}$. The passive components L_0 , C_{01} and C_{02} are placed on the Nano-Module.

The **Frequency f cut off** should be far above the carrier frequency and far below the second harmonic (14.5 MHz to 22 MHz). Take 14.5 MHz to 15.5 MHz for symmetrical tuning (and 17 MHz to 22 MHz for asymmetrical tuning).

The **Quality factor Q** depends on the overall system requirements and frame conditions. A value from 20 to 30 is recommended. The lower the Q , the better the stability and robustness of the antenna. The higher the Q , the higher the field strength.

The **Target impedance R_i** for maximum power is about 18..20 R (with driver current limit 250 mA). For battery powered devices take 50..80 R . The higher the target impedance is, the lower the operating distance of the reader

The fix values from the Nano Module are:

$$L_0 = 470 nH \text{ and } C_0' = C_{01} + C_{02} = 68 pF + 56 pF$$

Note: All the names of the capacitance and inductance are for the upper and the lower part in the plan. These parts are mirrored and have analogue the same values!

HF Frequency f	13.56	MHz
Antenna Inductance L_a	800	nH
Antenna Resistor R_{sa}	2	R
Quality Factor Q	27	
Target Impedance R_i	25	R
EMC cut off frequency $f_{cut\ off}$	14.6	MHz

Table 2.1: Input Parameter for the calculation tool

Fill in the parameters into the entry fields of the software.

Note for other hardware: The value for the inductance is given as $470\mu H$ (fix on the Nano Module). For other reader circuits you can change this value. The values $C01 = 68pF$ and $C02 = 56pF$ are fix deposited in the software. For adaption of the capacitance $C03$ and $C04$ change the values as long as you get the calculation EMC cut off frequency round $14.6MHz$. Note, that the EMC capacitance is always the sum of $C01$, $C02$, $C03$ and $C04$.

The matched parameters are shown, if you press the button **"Calculate"**. For safety check the calculated EMC frequency. With these calculated values you can test your antenna match.

2.2 Antenna Adaption 50 Ohm

Select the register card **"Antenna Adaption 50 Ohm"**.

Antenna Tuner V1.01

Antenna Adaption 50 Ohm | Antenna Direct Match

Input Parameter:

HF Frequency f	13,56	MHz	Quality Factor Q	27	
Antenna Inductance La	800	nH	Target Impedance Ri	25	Ohm
Antenna Resistor Rsa	2	Ohm	EMC cut off Frequency f	14,6	MHz

Circuit Diagram: T4NM-FD, EMC Filter, Matching, Antenna. Components include L_0 , C_{01} , C_{02} , C_{03} , C_{04} , C_1 , C_2 , R_p , R_{sa} , L_a . Values: $L_0 = 470nH$, $C_{01} = 68pF$, $C_{02} = 56pF$.

Information:

Antenna Capacity Ca	172	pF
EMC cut off f calc.	14,6	MHz
(Resistor Rs)	0,26	Ohm
(Resistor Rtr)	274,8	Ohm
(Resistor Xtr)	43,11	Ohm

EMC Parameter:

EMC Inductance L0	470	nH	Status:
$C01+C02+C03+C04$ (calculated)	254	pF	

EMC Chosen:

Capacity C03	120	pF
Capacity C04	10	pF

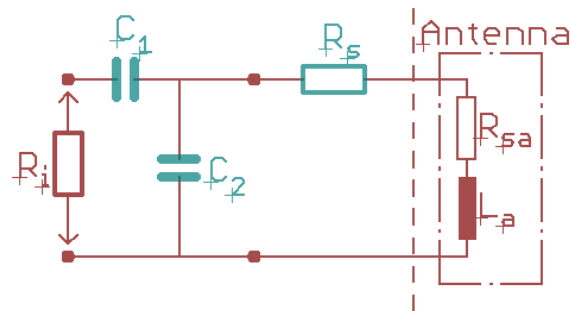
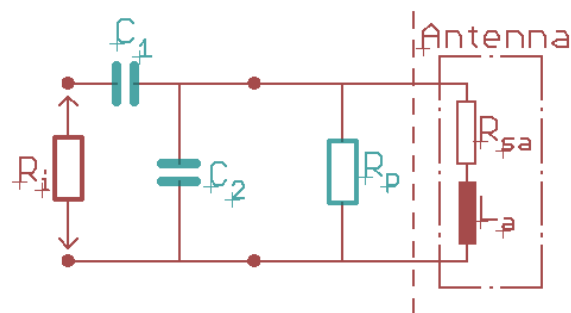
Calculated Match:

Serial Capacity C1	33	pF
Parallel Capacity C2	311	pF
Resistor Rp	1840	Ohm

Calculate

This antenna adaption is for reader with $R_i = 50R$ HF output.

There are two variants, the serial and the parallel variant to adapt the antenna to the reader. The requirement for the calculation tool is a "ideal" reader output $50R$. The imaginary part is in this case zero.

Variant 1 with Q-Adaption serialVariant 2 with Q-Adaption parallel

Fill in the parameters into the entry fields of the software.

HF Frequency f	13.56	MHz
Antenna Inductance L_a	800	nH
Antenna Resistor R_{sa}	3	R
Quality Factor Q	20	(f.e. good stability and robustness)
Target Impedance R_i	50	R

Table 2.2: Input Parameter

After you have filled in the parameters in the software, press button **"Calculate"** on the screen.

Start with the calculated capacitance values on your circuit and omit the resistor first. If the matching is good, then equip it.

3 Epilogue

The measured antenna values with the VNA or the calculated values with the tool in the web are start values for your antenna adaption to reader output. The whole calculation is a good starting point. In praxis you test the field strength with cards or token. But not the maximal *reading* value is the best adaption! Important is a good *reading, authentication and writing* distance for cards and token.

Dynamic Power Control (DPC): The Dynamic Power Control - enabled on the Nano Module NIFARE NFC - adapts the output power dynamically. The result is a good reader performance!

Asymmetrical tuning of the antenna: The antenna adaption is indeed easier, but has some disadvantages regarding the pulse shapes and receiver performance. The standard "asymmetrical" antenna tuning requires the DPC to be disabled. ELATEC does not support this feature for now.

4 Disclaimer

ELATEC reserves the right to change any information or data in this document without prior notice. The distribution and the update of this document is not controlled. ELATEC declines all responsibility for the use of product with any other specifications but the ones mentioned above. Any additional requirement for a specific custom application has to be validated by the customer himself at his own responsibility. Where application information is given, it is only advisory and does not form part of the specification.

All referenced brands, product names, service names and trademarks mentioned in this document are the property of their respective owners.